

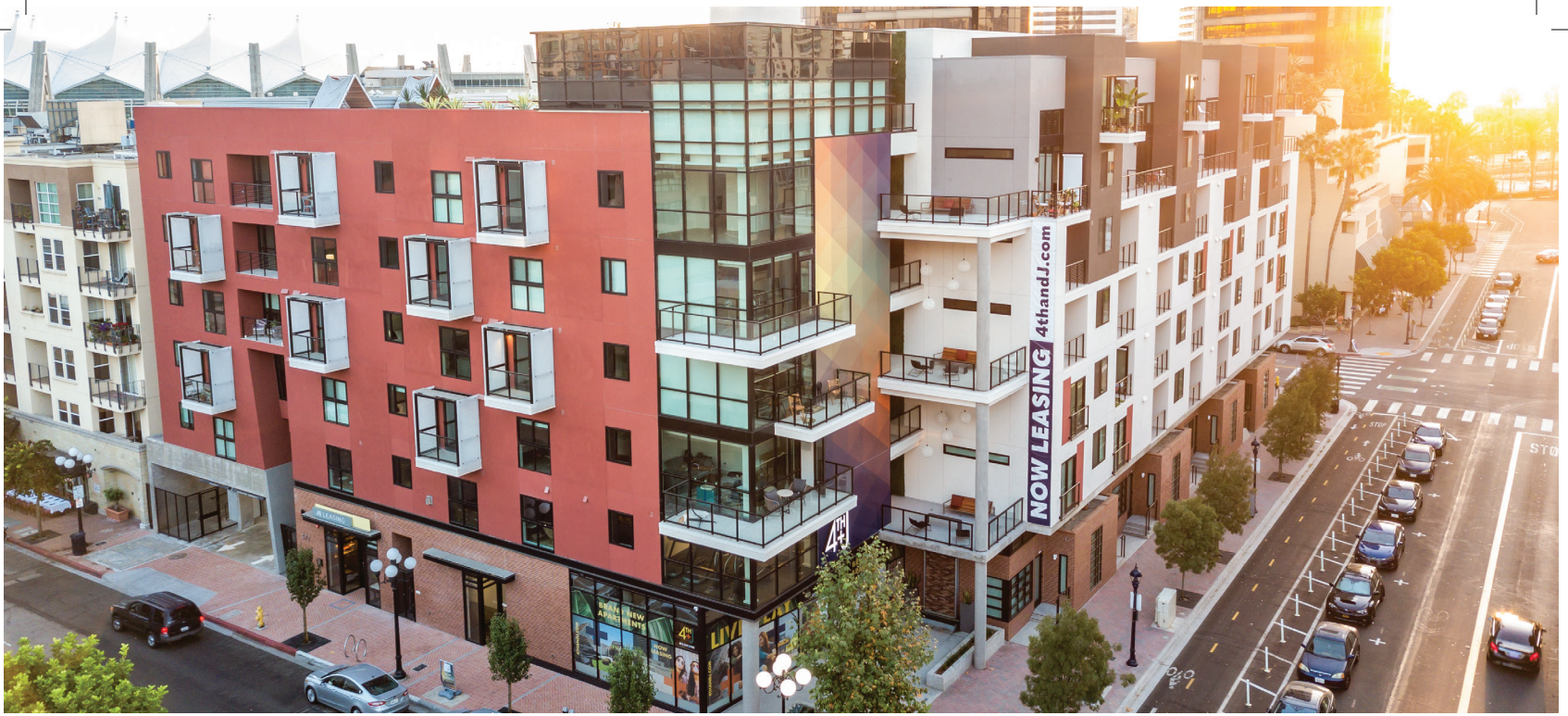


We're not just multi-family, we're multi-faceted.

The broad depth of our capabilities has made Legacy Partners
a proven leader in all aspects of multi-family real estate.



LegacyPartners.com



For over 50 years, Legacy Partners has a track record of consistently outperforming the competition:

- Acquisition & Development
- Investment Management
- Entitlement Assistance
- Construction Management
- Asset Management

Third Party Multi-Family Property Management Includes:

- New Community Lease-Up
- Conventional Stabilized
- Mixed-Use Retail
- Renovations & Repositioning
- Senior Communities
- Tax Credit & Affordable
- Receiverships & Broken Condominium Projects



Dallas | Denver | East Bay, CA | Inland Empire, CA | Los Angeles | Orange County, CA
Orlando | Portland | San Diego | San Francisco | San Jose, CA | Seattle



Contact us today to learn more about our experience and capabilities.

5141 California Avenue, Suite 100, Irvine, CA 92617-3050

949-930-6600 | dobrien@legacypartners.com | LegacyPartners.com